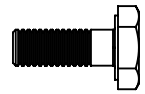


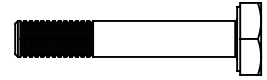
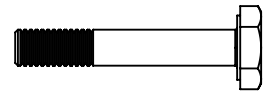
E00-2300 - 1 EA.  
AN3-4A 3/16 X 1/2  
BOLT

TAIL ROTOR PITCH  
ACTUATOR ARM /  
ACTUATOR ARM  
SPACER



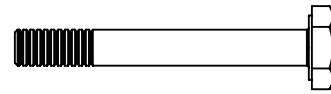
E00-2305 - 2 EA.  
AN3-11A 3/16 X 1 1/8  
BOLT

SHORT BOLT THRU BLADE  
/ PIN / HORN



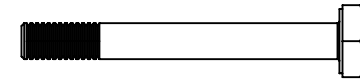
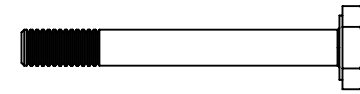
E00-2320 - 1 EA.  
AN3-14A 3/16 X 1 1/2 BOLT

TAIL ROTOR PITCH  
ACTUATOR ARM /  
ACTUATOR ARM SPACER  
SHORT



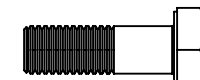
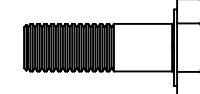
E00-2308 - 2 EA.  
AN3-15A 3/16 X 1 5/8 BOLT

LONG BOLT THRU BLADE /  
PIN / HORN



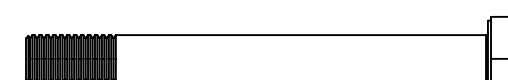
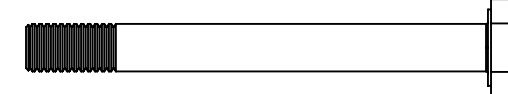
E00-2401 - 2 EA.  
AN4-6A 1/4 X 3/4 BOLT

TAIL ROTOR PITCH  
ACTUATOR ARM . SLIDER  
TOTO ACTUATOR ARM  
CLEVIS WELDMENT



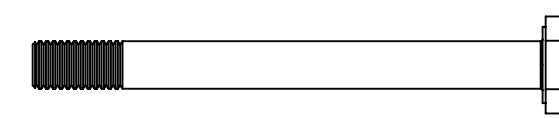
E00-2414 - 2 EA.  
AN4-23A A/4 X 2 3/8 BOLT

TAIL ROTOR BALANCE  
BEAM / PITCH HORN



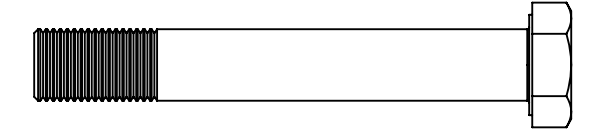
E00-2416 - 1 EA.  
AN4-25A, 1/4 X 2 5/8 BOLT

PITCH ACTUATOR ARM  
PILOT / TAIL ROTOR PITCH  
ACTUATOR ARM



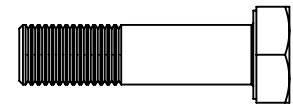
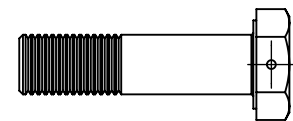
E00-2604 - 1 EA.  
AN6-24A 3/8 X 2 1/2  
BOLT

TAIL ROTOR BARREL /  
TAIL ROTOR SHAFT



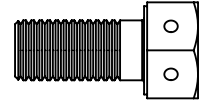
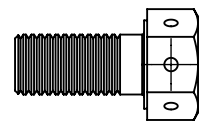
E00-2509 - 2 EA.  
AN5H11A 5/16 X 1 1/8  
BOLT, DRILLED HEAD

PITCH HORN / 5/16 MALE  
ROD END



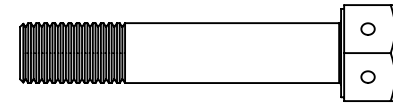
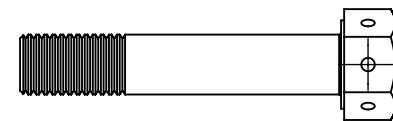
E00-2503 - 2 EA.  
MS20074-05-05 5/16-18 X 5/8  
BOLT, DRILLED HEAD

SLIDER ACTUATOR ARM  
CLEVIS WELDMENT /  
CARRIAGE SLIDER ASSEMBLY

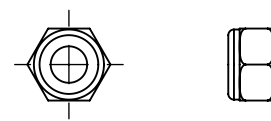


E00-2515 - 2 EA.  
MS20074-05-15 5/16-18 X 1 5/8  
BOLT, DRILLED HEAD

PITCH LINK EYELET /  
CARRIAGE SLIDER ASSEMBLY



E00-3301 - 4 EA.  
NUT, SELF LOCKING,  
NONMETALIC INSERT,  
10-32, AN365-1032A /  
MS20365-1032A



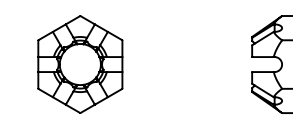
E00-3402 - 3 EA.  
NUT, SELF LOCKING,  
NONMETALIC INSERT, 1/4-  
28, AN365-428A / MS20365-  
428A

1 EA. PITCH ACUATOR ARM  
PIVOT BOLT  
2EA. PITCH ACTUATOR ARM  
/ CLEVIS WELDMENT



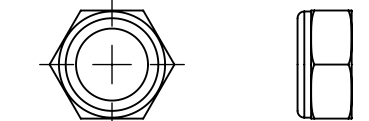
E00-3400 - 3 EA.  
AN310-4 1/4 CASTLE NUT

OPTIONAL NUTS TO USE  
INSTEAD OF E00-3402



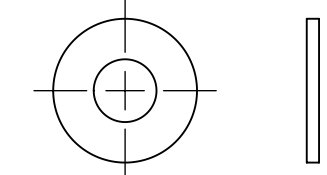
E00-3602 - 1 EA.  
NUT, SELF LOCKING,  
METALIC INSERT, 3/8-24

TAIL ROTR BARREL / TAIL  
ROTOR SHAFT

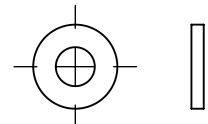


E00-4502 - 8 EA.  
MS27183-11 5/16 LARGE OD  
WASHER

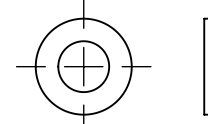
4EA. SLIDER ACTUATOR ARM  
CLEVIS WELDMENT /  
CARRIAGE SLIDER ASSEMBLY  
4 EA. 5/16 ROD END



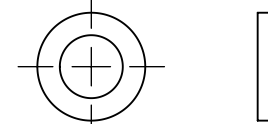
E00-4301 - 10 EA.  
AN960-C10 REGULAR  
WASHER #10 (3/16)



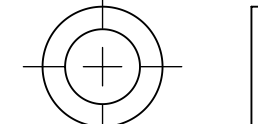
E00-4401 - 10 EA.  
WASHER, REGULAR,  
AN960-C416 1/4



E00-4501 - 8 EA.  
AN960-C516 REGULAR  
WASHER 5/16

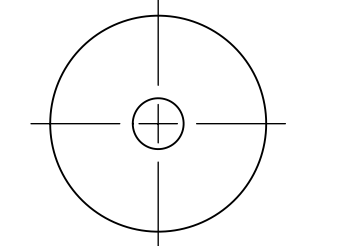


E00-4600 - 2 EA.  
AN960-C616 REGULAR  
WASHER 3/8



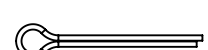
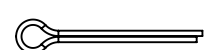
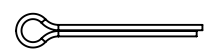
E00-4403 - 6 EA.  
AN970-4 1/4 FENDER WASHER

TAIL ROTOR BALANCE BEAM  
SPACERS

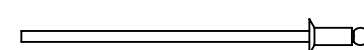


E00-5000 - 3 EA.  
MS24665-134 COTTER PIN, STEEL  
CAD PLATED, 1/16 X 3/4

2EA. TAIL ROTOR PITCH  
ACTUATOR ARM  
1 EA. PITCH ACTUATOR ARM  
PIVOT BOLT



E00-6200 - 16 EA.  
RIVET, BLIND 3/32 X 1/8 CSK  
PAAK-302



E17-6250 - 2 EA.  
GREASE ZERK, STRAIGHT, 1/16 NPT

TAIL ROTOR



E17-6260 - 2 EA.  
O-RING AS568A-119  
NITRILE (BUNA)

